

## ROBOEYE The vision system for Industrial robot



### Quick to install and use

Installation one LAN cable with Robot

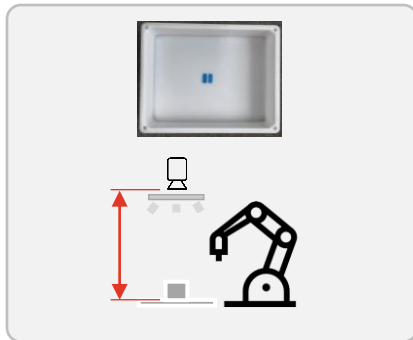
### Easy to use

Quick setup and simple program

### Price competitiveness

30% or more compared to competitors

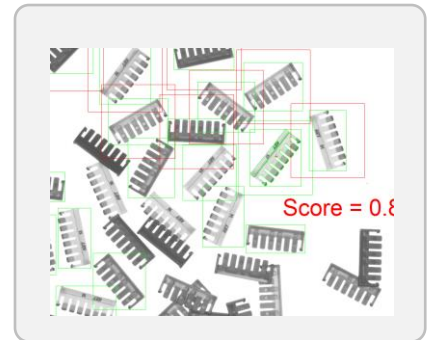
### Long distance, Huge area



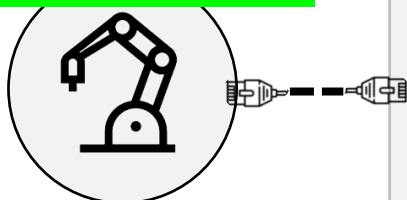
### Find out Subtle differences



### Inspection overlap, tangle

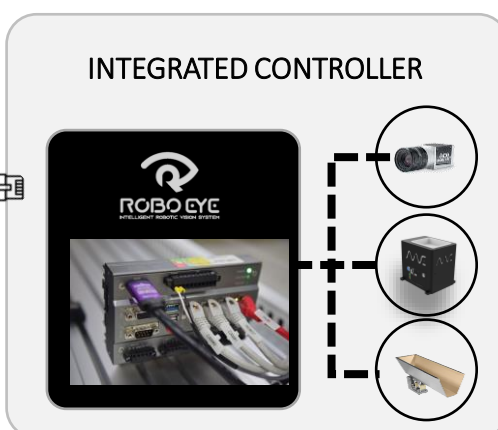


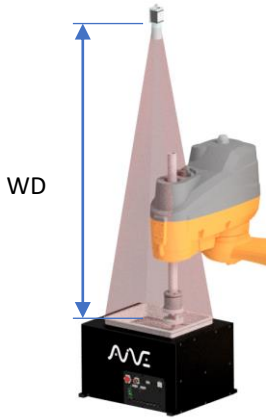
### Integration with Various Robot brand



STÄUBLI ABB FANUC  
KUKA YASKAWA EPSON

### INTEGRATED CONTROLLER

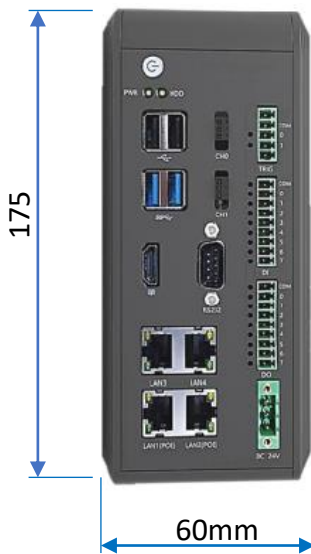




Resolution	1.3Mp (1282px x 1026 px)		5Mp (2592px x 1944px)	
Model	AIVE 2.0	AIVE 3.0	AIVE 2.0	AIVE 3.0
WD	900	900	850	850
Lens	32mm	25mm	25	16
FOV	155 * 123	245 * 194	194 * 146	303 * 228
Px size	0.12mm	0.18mm	0.08mm	0.12mm

## Controller

### ControlX-200G



#### CX-200G System Core

- CPU Intel® Apollo Lake Atom CPU J3455E
- Memory 8GB RAM Storage 64G (SSD)

#### Operating System

- OS Windows 10 IoT Ent (64bit)
- Graphic Display 1 x HDMI

#### Camera Interface

- GigE 2-CH Gigabit (POE) I/O Ethernet 2 x GbE ports
- DI/O 8 DI, 8 DO
- Lighting Control 2 x Channel
- USB 2x USB2.0, 2 x USB3.0 & 1 x USB2.0 internal
- Serial 1 x RS-232
- Power Supply DC 24V DC

#### Physical

- Dimension 175 x 126 x 60mm (W x H x D)
- Weight ~2.4KG
- Certification/EMC CE/FCC/RoHS

#### Mouse and Keyboard Monitor



#### Operation software



#### External control



## Camera



#### 5Mp\_Basler ace series

- 2592 px x 1944 px
- Mono
- GigE interface

#### 1.3Mp\_Basler ace series

- 1282 px x 1026 px
- Mono
- GigE interface

#### AIM company

[www.aim-fa.com](http://www.aim-fa.com)

[sales@aim-fa.com](mailto:sales@aim-fa.com)

Tel 031-548-0748

32, Hanil-ro 23beon-gil, Giheung-gu,  
Yongin-si, Gyeonggi-do, Republic of  
Korea



Youtube